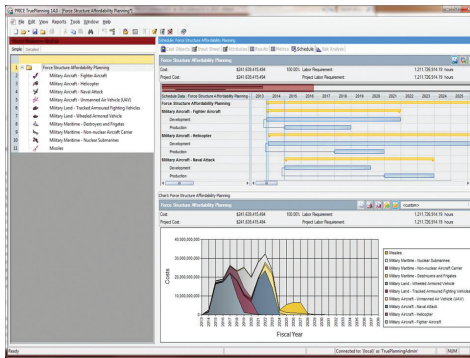


# Specialized Cost Models for Military Structure Alternatives

PRICE cost estimating solutions deliver qualities that meet the demand for credible, data-driven estimating in today's economy—speed, accuracy, transparency, defensibility and standardization.

- **Produce credible top-down estimates** backed by extensive analysis and refinement of historic data points, correlated to the scope and complexity of specific projects.
- **Use multiple cost models** integrated within a single estimate, for a more accurate picture of true costs across all components and disciplines.
- **Reduce cost proposal** cycle time and expense by 30%-60%.



*Concept Models tailored to the PRICE® TruePlanning™ Cost Estimating Framework provide cost data for a variety of military aircraft, ships, and vehicles for unprecedented force structure planning.*

## Harness TruePlanning advantages for military hardware cost estimating

For defense applications, PRICE offers a library of military Concept Cost Models—originally developed by Phillip Pugh, using publicly available U.K. Ministry of Defense data. These models are compatible with the PRICE® TruePlanning™ Framework and can be integrated with other PRICE® COST MODELS™ in that framework to support a single estimate for a complex program.

This family of cost models provides the benefit of actual data and experience derived from a range of military applications:

- **Military Aircraft:** Includes fighter aircraft, naval attack aircraft, helicopters, and unmanned air vehicles (UAVs).
- **Military Maritime:** Ranges from destroyers and frigates to non-nuclear aircraft carriers and nuclear submarines.
- **Military Land Vehicles:** Tracked armored fighting vehicles and wheeled armored vehicles.
- **Missiles**

## Concept Cost Model Performance Benefits

PRICE and the UK MoD teamed to create a catalog of data-driven cost models for high-level, force structure planning and analysis.

- Use within the PRICE TruePlanning Framework to reduce estimating time to days or hours
- Support System of Systems (SoS) estimates
- Cover a broad range of military platform acquisition
- Factor comprehensive cost drivers, component/assembly/subsystem, and hardware/software integration
- Use the framework's versatility to create instant "what if" and trade-off analyses
- Integrate with other cost models used in PRICE TruePlanning
- Enable complex modeling for teams with diverse experience/skill sets
- Automate sensitivity and schedule/effect analyses
- Create cost distributions over time, and provide cost impact estimates for accelerated, interrupted, or protracted development schedules
- Summarize monthly cost and progress for budgeting, risk analysis, and project tracking
- Seamless integration with Microsoft® Excel®

## Fact-based cost modeling, at a system level

PRICE Cost Models provide fact-based integrity designed to accommodate system-level perspective. Unlike speculative techniques or “guesstimates,” the PRICE Concept Cost Models use hardware-specific parametric data models and benchmarks built on public data gleaned from known applications. This reliable data, plus the hundreds of proven cost estimating relationships embedded in the models and the TruePlanning framework, deliver credible estimates.

## Account for integration costs, too

Overlooking or miscalculating the costs to modify and integrate finished components into a system build often requires estimates to be reworked. The ability of PRICE TruePlanning to factor in hardware component, assembly, subsystem, and software integrations, up front, means more accurate estimating for better decision-making and fewer requirements to make adjustments after the fact.

## Gain the benefit of repeatable methodologies

PRICE methodologies use industry and in-house historical data that enable users to improve their estimating process incrementally, with every successive project. The more projects estimated with PRICE Cost Models for TruePlanning, the greater your historical data relevance and estimating accuracy.

## Harness the power of PRICE Research

PRICE Cost Models leverage the experience of PRICE® Research™, the industry’s most effective independent cost research organization, representing four decades of experience serving government, commercial, and industrial programs.

## PRICE TruePlanning: One framework for multiple solutions

PRICE Cost Models for the PRICE TruePlanning framework integrate data-driven credibility within estimates spanning multiple disciplines:

- **PRICE Hardware Models** for chips, components, modules, and COTS or custom hardware
- **PRICE Software Models** for custom, COTS, and SOA uses
- **PRICE Systems Models** for process and assembly tasks
- **PRICE IT Models** for IT Infrastructure
- **PRICE Early Concept Models** for military aircraft, ships, vehicles
- **Customer-specific cost models**

PRICE TruePlanning Companion Applications add flexibility and power for sharing and managing data with the cost estimating framework.

## PRICE TruePlanning’s role in Estimating Systems Integration

The compatible family of PRICE® TruePlanning™ Cost Estimating Framework and Companion Applications, PRICE® Integrated Cost Models™, PRICE® TrueFindings™, and PRICE® TrueMapper™ empowers a more strategic view of cost estimating and life cycle cost management, within the context of PRICE Estimating Systems Integration.



**DECADES OF COST ESTIMATING EXCELLENCE**

© 2013, PRICE Systems, LLC. All Rights Reserved. TruePlanning, TrueFindings, TrueMapper, PRICE Cost Models, PRICE Research, and the PRICE logo are trademarks of PRICE Systems, LLC.